



**WEST MIDLANDS**  
COMBINED AUTHORITY

**GROWING THE UK ECONOMY**  
THROUGH A MIDLANDS ENGINE

BIRMINGHAM • COVENTRY • DUDLEY • SANDWELL • SOLIHULL • WALSALL • WOLVERHAMPTON

# Introduction to the West Midlands Combined Authority



**WEST MIDLANDS**  
COMBINED AUTHORITY

# Aims

- Secure long term investment rather than short term budget allocations to stimulate economic growth for the region
- Tackle the long term challenges faced by all local authorities and recognised as priorities for the region:
  - transportation
  - skills
  - support for businesses
  - housing needs and land constraints
  - public sector reform
- Influence the delivery of national government programmes to address local need



**WEST MIDLANDS**  
COMBINED AUTHORITY

Find out more at [www.westmidlandscombinedauthority.org.uk](http://www.westmidlandscombinedauthority.org.uk)

# Working with the voluntary sector

- The voluntary sector are already working with local authorities on a range of initiatives
- Voluntary sector is at the heart of communities and have established networks that we should utilise
- The voluntary sector voice is a powerful voice and we want to hear you
- Important that you know what's happening regionally.



# Scale of ambition

## 3 LEPs – key benefits

- 4 million people
- £80bn GVA
- 20 local authorities
- 90% self-containment



**WEST MIDLANDS**  
COMBINED AUTHORITY

Find out more at [www.westmidlandscombinedauthority.org.uk](http://www.westmidlandscombinedauthority.org.uk)



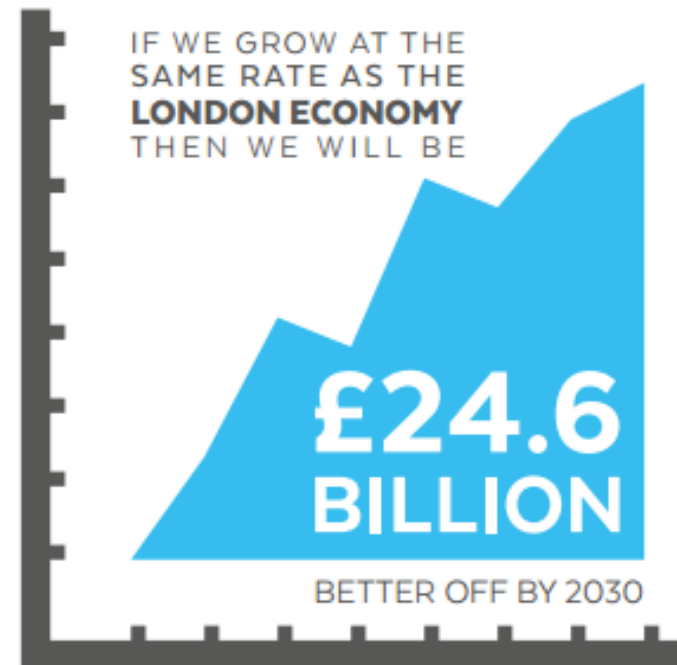
# Economy Plus

More than the sum of our parts...

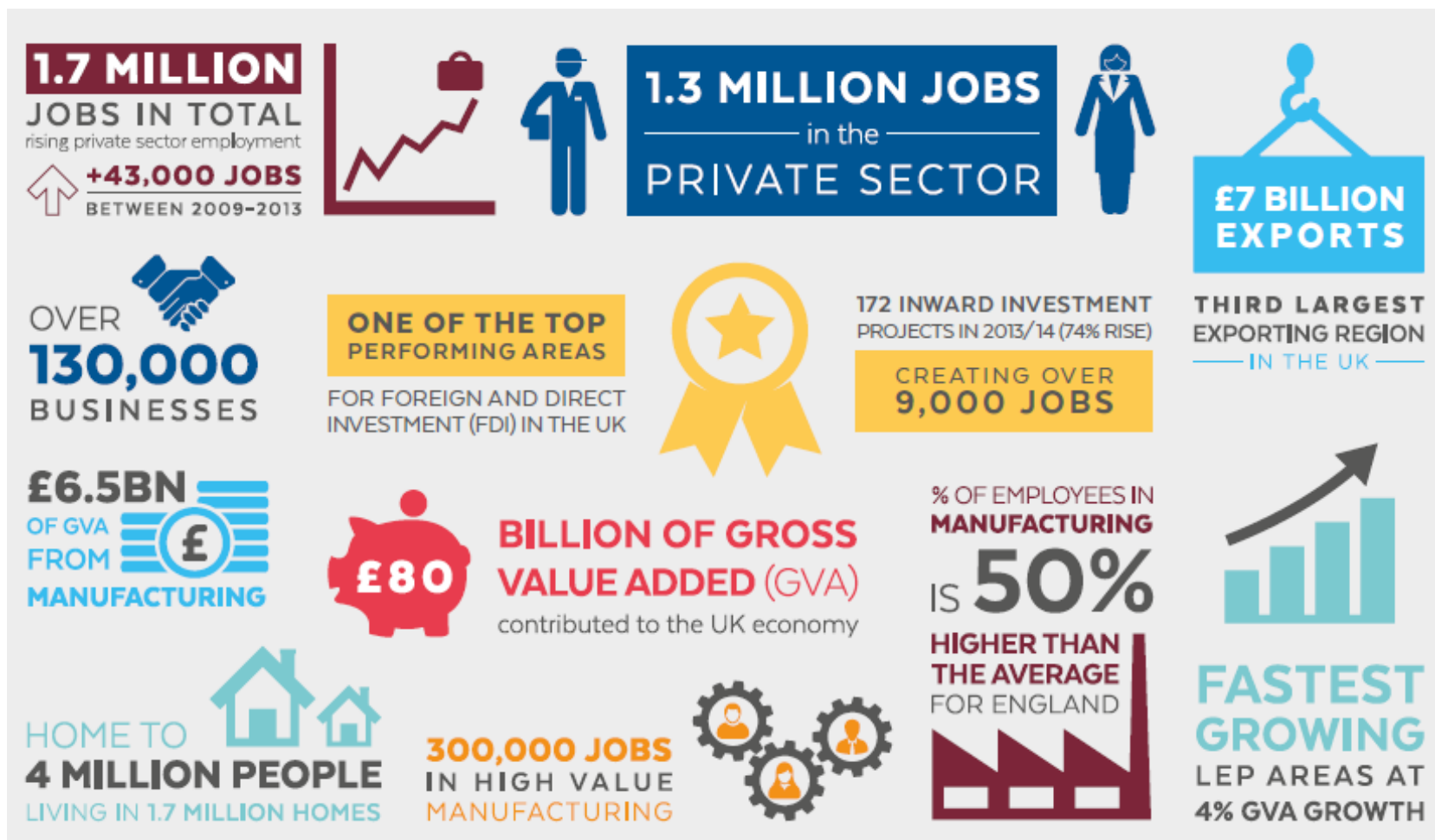
- Facilitates the Midlands Engine
- Accelerate combined benefits
  - close £16bn productivity gap
- Drive public services reform
  - close £3.4bn public spending gap



**WEST MIDLANDS**  
COMBINED AUTHORITY



# The economic context

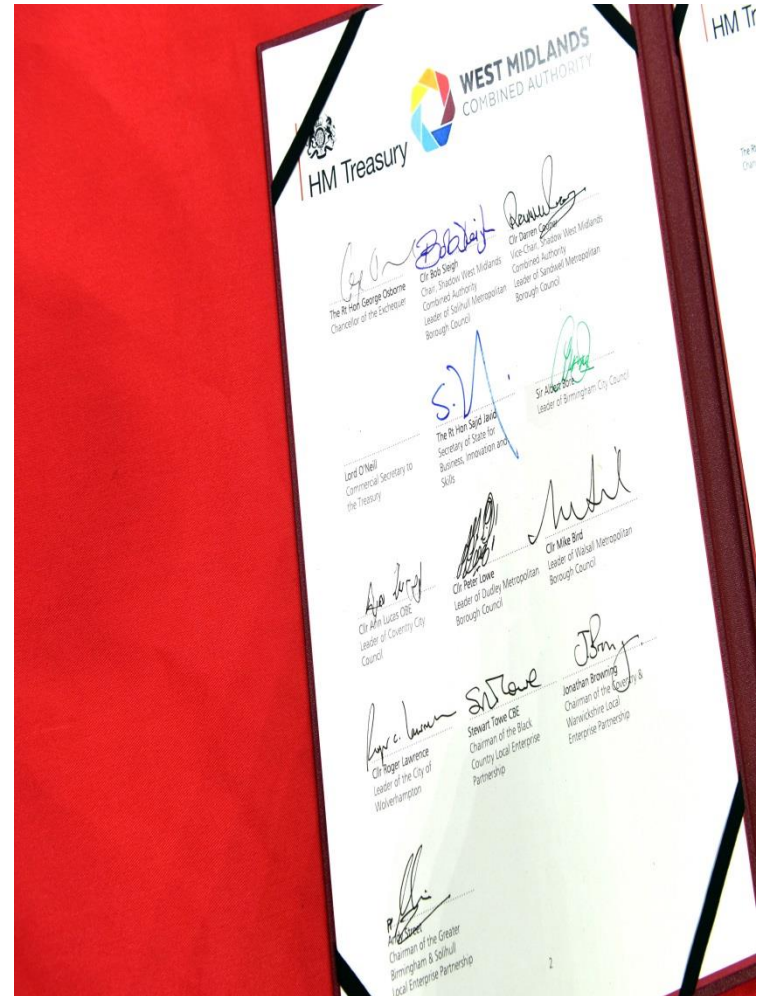


**WEST MIDLANDS**  
COMBINED AUTHORITY

Find out more at [www.westmidlandscombinedauthority.org.uk](http://www.westmidlandscombinedauthority.org.uk)

# Deal overview

- **Not** the formal devolution deal – **it is** an agreement that enables the Shadow Board, on behalf of the potential constituent members, to enter into a process of clarification and refinement of the process
- Largest financial deal to date
- Annual contribution from government of £40m for 30 years to unlock an overall investment package of £8b
- Covers the three LEP geography
- Underpinned by strong public / private sector partnership
- First of many deals



**WEST MIDLANDS**  
COMBINED AUTHORITY

Find out more at [www.westmidlandscombinedauthority.org.uk](http://www.westmidlandscombinedauthority.org.uk)



# Skills and employment

- Proposal across the 3 LEP geography
- Potentially up to 500,000 jobs which could add £14 billion to the West Midlands' economy
- Underpinned by an employment and skills Strategy
- CA to chair a CA-wide area based review
- Devolved 19+ adult skills funding from 2018/19
- Co-design employment support for hardest-to-help claimants



# Supporting business & innovation

- Proposal covers the 3 LEP geography
- Integrated national and local support structure for businesses wanting to invest
- Joint planning and promotion of regeneration sites
- Ring-fenced trade services resources based on agreed export plan
- Design joint approach to enterprise start-ups
- Expert advice offered to develop Innovation Audit Expression of interest



**WEST MIDLANDS**  
COMBINED AUTHORITY

Find out more at [www.westmidlandscombinedauthority.org.uk](http://www.westmidlandscombinedauthority.org.uk)

# More and better homes

- Devolved CPO and HCA powers
- Support for the West Midlands Land Commission (covers 3 LEP geography)
- £200m Land Remediation Fund
- Commitment to consider a Housing Investment Fund



**WEST MIDLANDS**  
COMBINED AUTHORITY

Find out more at [www.westmidlandscombinedauthority.org.uk](http://www.westmidlandscombinedauthority.org.uk)

# Transport

- Devolved multi-year transport settlement
- Responsibility for franchised bus services – to support smart ticketing
- Responsibility for a new Key Route Network
- Commitment to look at reducing congestion on the strategic road network
- MoU with Highways England and Network Rail
- Implement Low Emission Zones



**WEST MIDLANDS**  
COMBINED AUTHORITY

Find out more at [www.westmidlandscombinedauthority.org.uk](http://www.westmidlandscombinedauthority.org.uk)

# HS2 growth strategy

- Support for the HS2 Growth Strategy
- Agreement to the city centre EZ extension
- £97m for Eastside Metro Extension to Digbeth
- Commitment to consider business cases for Metro Extensions to Brierley Hill and Interchange
- Requirement to produce Implementation Plan



**WEST MIDLANDS**  
COMBINED AUTHORITY

Find out more at [www.westmidlandscombinedauthority.org.uk](http://www.westmidlandscombinedauthority.org.uk)



# Public sector reform

Government commitment to:

- Engage with outcomes of the Mental Health Commission
- Co-design new approach for troubled individuals
- Consider further devolution of youth justice services
- Support public sector relocations



**WEST MIDLANDS**  
COMBINED AUTHORITY

Find out more at [www.westmidlandscombinedauthority.org.uk](http://www.westmidlandscombinedauthority.org.uk)

# The Mayor

- Government has decided the West Midlands Combined Authority Devolution Agreement, will be based on the establishment of a directly elected mayor.
- The mayor will operate within a partnership model.
- This will include a cabinet made up of the metropolitan district leaders each with lead responsibility for a different policy area.



**WEST MIDLANDS**  
COMBINED AUTHORITY

Find out more at [www.westmidlandscombinedauthority.org.uk](http://www.westmidlandscombinedauthority.org.uk)

# Engagement and consultation

- On-going series of formal and informal briefings and events with the business, private, educational and third sector communities across the region
- A three week formal consultation on the WMCA's proposed role and function with nearly 2000 respondents
- Overwhelmingly positive support from the region's businesses with an average approval/support rating of 82% across the five questions in the survey





**WEST MIDLANDS**  
COMBINED AUTHORITY

Find out more at [www.westmidlandscombinedauthority.org.uk](http://www.westmidlandscombinedauthority.org.uk)