



The Global Creative Legacy Grants

Information and how to apply



Easy
Read

Easy Read



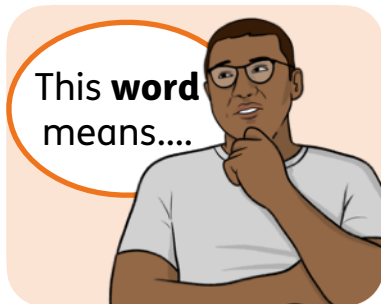
This is an Easy Read version of some information. It may not include all of the information but it will tell you about the important parts.



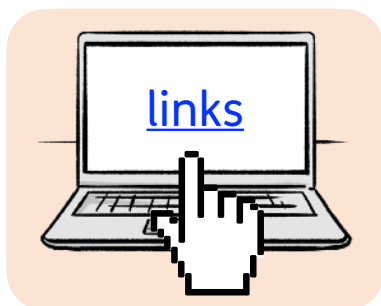
This Easy Read booklet uses easier words and pictures. Some people may still want help to read it.



Some words are in **bold** - this means the writing is thicker and darker. These are important words in the booklet.



Sometimes if a bold word is hard to understand, we will explain what it means.



Blue and underlined words show links to websites and email addresses. You can click on these links on a computer.

What is in this booklet

About this booklet	4
Who are the Global Creative Legacy Grants for?	6
What are the Global Creative Legacy Grants for?	8
How much money are the Global Creative Legacy Grants?	11
How you can get a Global Creative Legacy Grant	12
What costs should you include in your application?	15
How we will make a decision	19
What happens next	21
Find out more	22

About this booklet



This booklet is from the **West Midlands Combined Authority (WMCA)**.



The **West Midlands Combined Authority (WMCA)** is a group of 18 local authorities. We are working together to make the West Midlands a better place to live.



We would like to give **grants** to some arts organisations. A **grant** is a set amount of money.



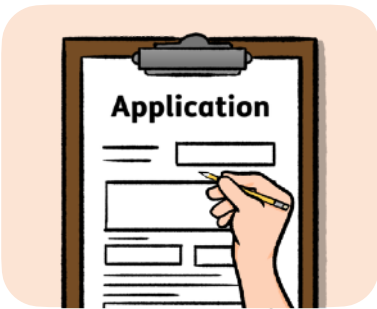
Global Creative Legacy Grants

We are calling these grants: Global Creative Legacy Grants.

This booklet will tell you:



- About our Global Creative Legacy Grants.



- How your organisation can apply for a Global Creative Legacy Grant.

Who are the Global Creative Legacy Grants for?

The grants are for:



- Arts organisations that are already doing a project with a partner in a different country.



- Arts organisations that would like to start a new project with a partner in a different country.

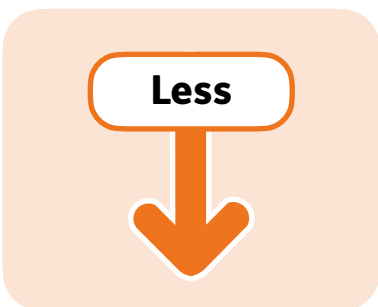


The organisation must be doing a project with a country from the green list on this website: www.oecd.org/dac/financing-sustainable-development/development-finance-standards/DAC-List-of-ODA-Recipients-for-reporting-2022-23-flows.pdf



We will only give grants to arts organisations that are in these areas:

- Birmingham.
- Coventry.
- Dudley.
- Sandwell.
- Solihull.
- Walsall.
- Wolverhampton.



We will also be looking at giving a smaller number of grants to art organisations that are in these areas:

- Cannock Chase.
- North Warwickshire.
- Nuneaton and Bedworth.
- Redditch.
- Rugby.
- Shropshire.
- Stratford-on-Avon.
- Tamworth.
- Telford and Wrekin.
- Warwickshire.

What are the Global Creative Legacy Grants for?



Organisations must spend their grant on the project they are doing with a partner in a different country.

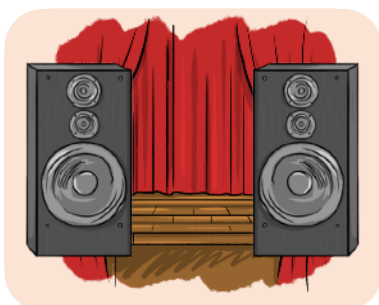
The project should be an arts or culture project. Examples of this kind of project include:



- Making a piece of artwork.



- **Arts research** - this is when you collect and look at information to find out new things about art or how to make it.



- A music festival, show or other event.



The project should be about an issue that the world is dealing with right now.



The project can take place:

- In person.



- Online.



- Both in person and online.

Organisations might use their grant to:



- Improve their project or make it bigger.



- Try new ways of doing their project.



- Share their project with more countries.



Organisations must make sure that their project activities are finished by 31 December 2024.

How much money are the Global Creative Legacy Grants?



£2500 to £8000

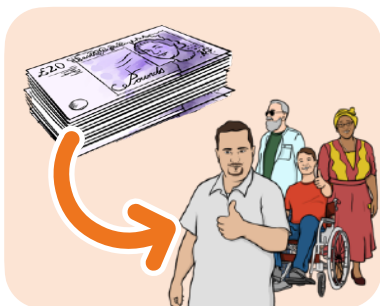
We are giving £2500 to £8000 for projects.



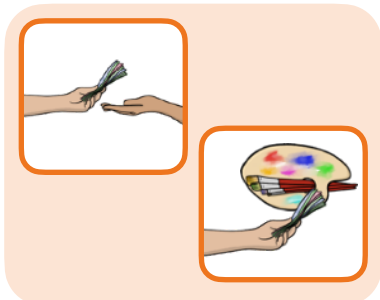
Organisations must work out how much money they would like to ask for.



If an organisation gets a Global Creative Legacy Grant, they cannot get another international grant from us.

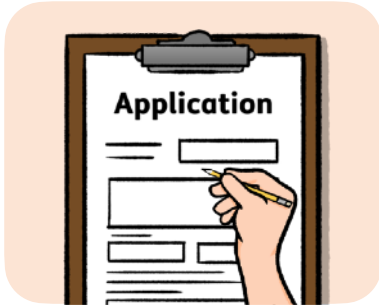


Organisations must share half of the grant money with the group from a different country that they are working with.



The money can be shared by giving payments straight to the group, or by paying for things for them.

How you can get a Global Creative Legacy Grant



You must apply if your organisation would like a Global Creative Legacy Grant.



You will be able to apply on the grant website here:

www.wmccaculture.grantplatform.com

To apply you will need to follow these steps:



1. Make an account on the grant website.



2. Answer the questions in the 'eligibility quiz'.



3. Answer the questions in the application about yourself or your organisation, and your suggested activities.



4. Send your application.



5. If you get a grant, you must then read and sign a grant agreement and give us your bank details.



The application will include questions about:

- You or your organisation.



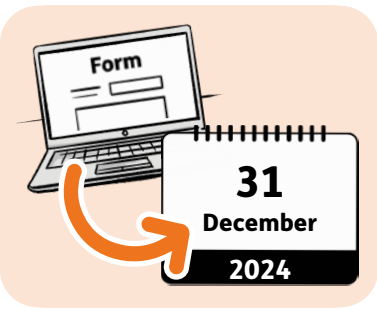
- Your project.



The application will also include questions about how much money you are asking for, and what you would spend it on.



If you get a grant, you will get most of the money after you sign the grant agreement.



You must fill in a final form by 31 December 2024 about what you did.

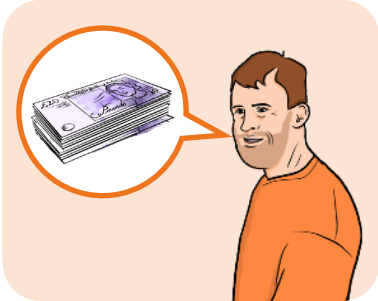


You will then get the rest of your money.



You must not start your project before you sign the grant agreement.

What costs should you include in your application?



In your application, you must explain how much money you are asking for and what you would spend it on.



You must spend the money on costs that are to do with your project.

This might include things like:



- Travel costs, like transport tickets and hotel stays.

If you travel anywhere for your project you must buy travel insurance. This can be included in your travel costs.



- Paying to go to events that will help with your project.



You might also spend the money on materials or equipment that are needed to make your project happen.

We can not give you money for:



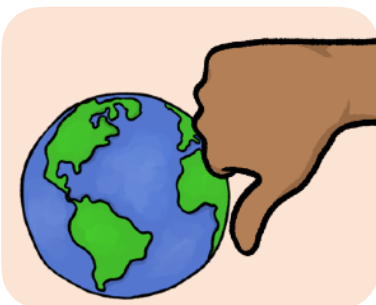
- Costs that are not to do with your project.



- Any project activities that have already happened.



- Project activities that will take place after 31 December 2024.



- Project activities that do not work with partners in other countries.

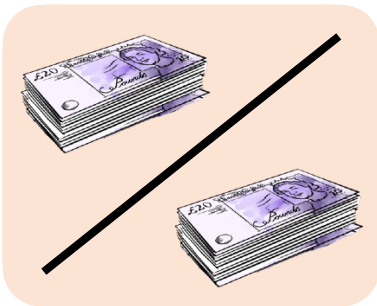
Personal access costs



Personal access costs include any money that you will spend on making sure you can take part in your project.



Like paying for a carer who will help you take part.



Personal access costs are separate from your other costs.

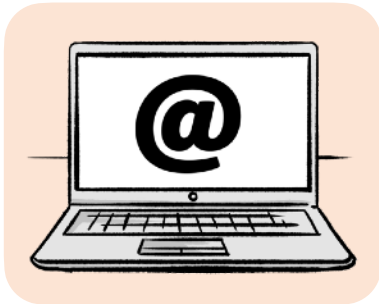


If you are not sure about anything to do with costs you can email: culture@wmca.org.uk

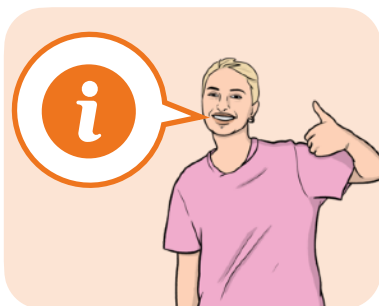


Please put 'international fund' in the 'subject' box when you email us.

Help with the application



If you need any help with your application you can email: culture@wmca.org.uk



You can also ask for any information to be given to you in a way that you understand, like braille.



We can not tell you exactly what to write when you do your application, but we can give you advice on what should be included.

How we will make a decision



Our **panel** will decide which organisations get a Global Creative Legacy Grant.



A **panel** is a group of people. Our panel includes people from:

- The West Midlands Combined Authority.
- The British Council.

Our panel will look at everyone's applications. They will focus on:

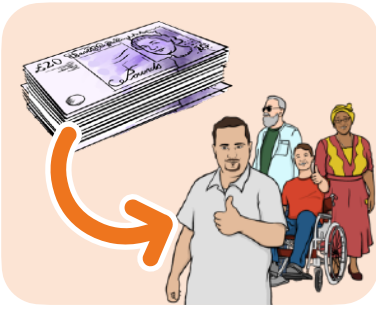


- Whether your application meets our requirements.



- The project and what it is about.

The panel will also focus on:



- How the money will be shared with a group from a different country.



- What the money will be spent on.



- Whether the project will be finished by 31 December 2024.



- How your project might carry on helping you or other people in the future.

What happens next



If you would like to apply for a Global Creative Legacy Grant, you need to do this by 29 April 2024.



You will find out if you have got the grant up to 8 weeks after 29 April 2024.



We will then ask you for some extra information so that we can give you the first part of the money.

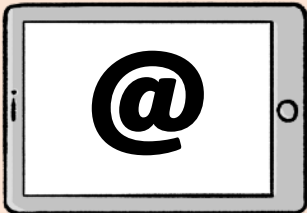


Remember, you must not start your project before you sign the grant agreement.

Find out more



You can look at our website here:
www.wmca.org.uk/



You can contact us by email:
culture@wmca.org.uk



You can find information about how we use your information on our website. This information is called our **privacy policy**.



You can also find information about how to complain on our website. This information is called our **complaints policy**.