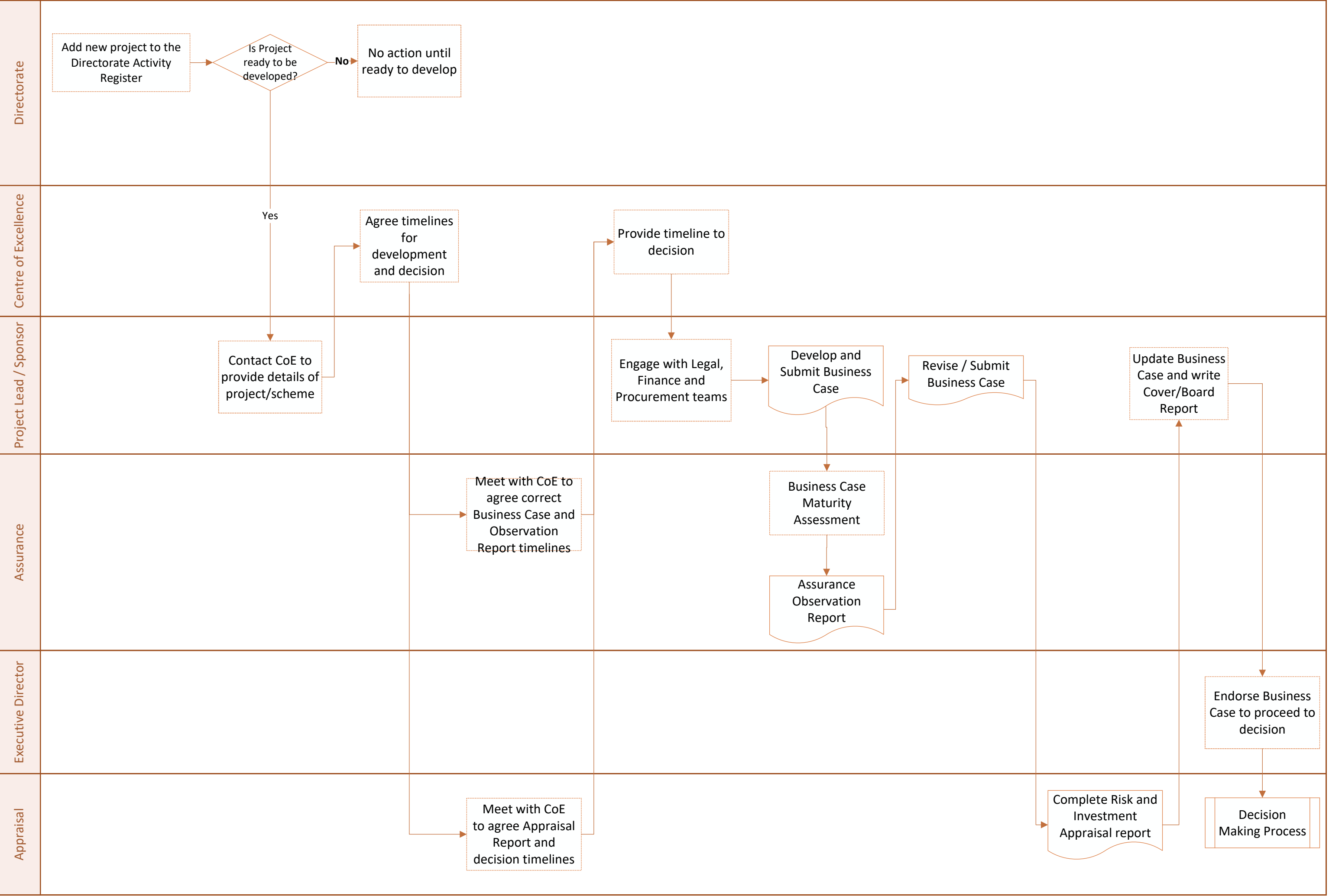
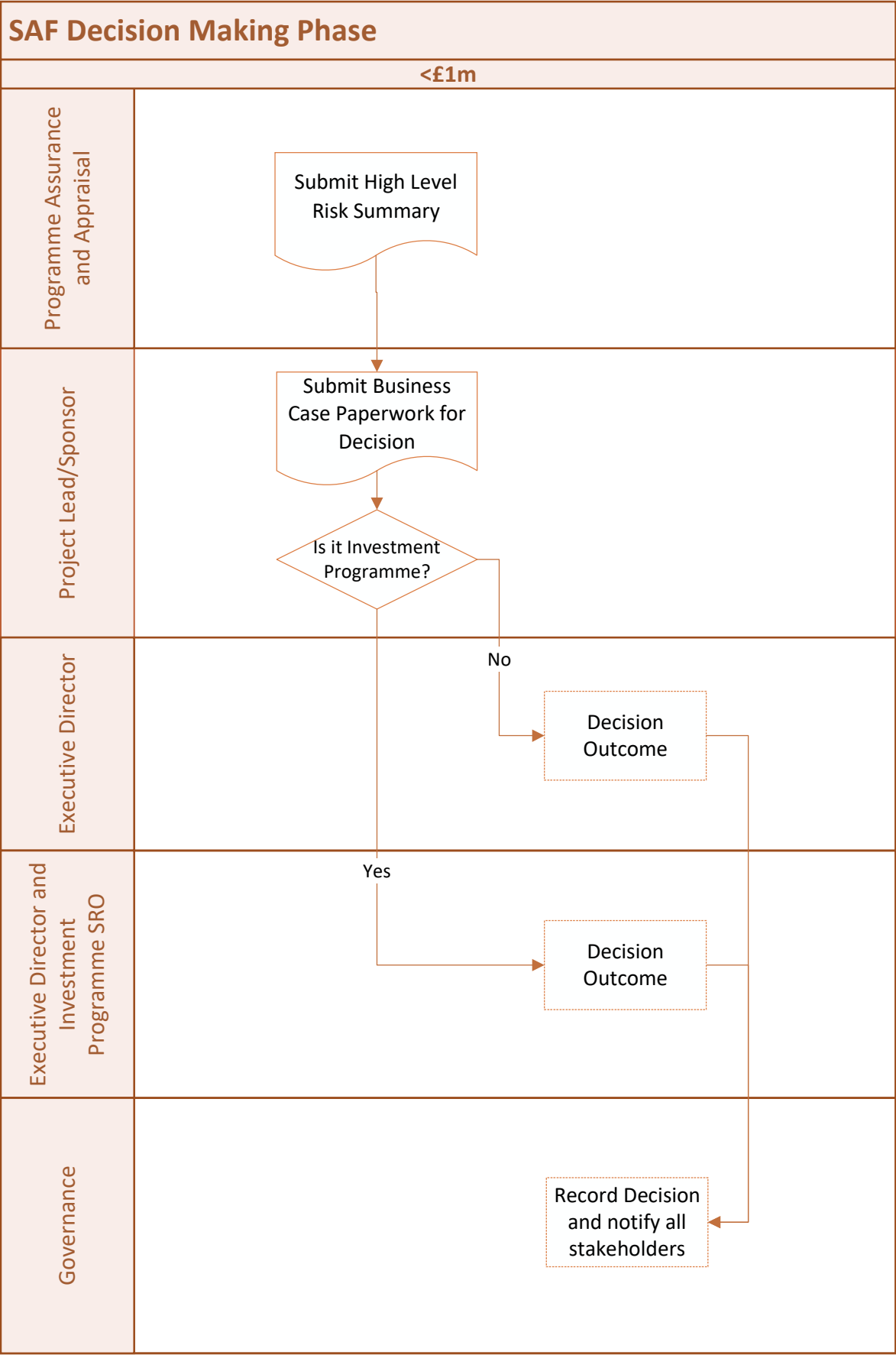
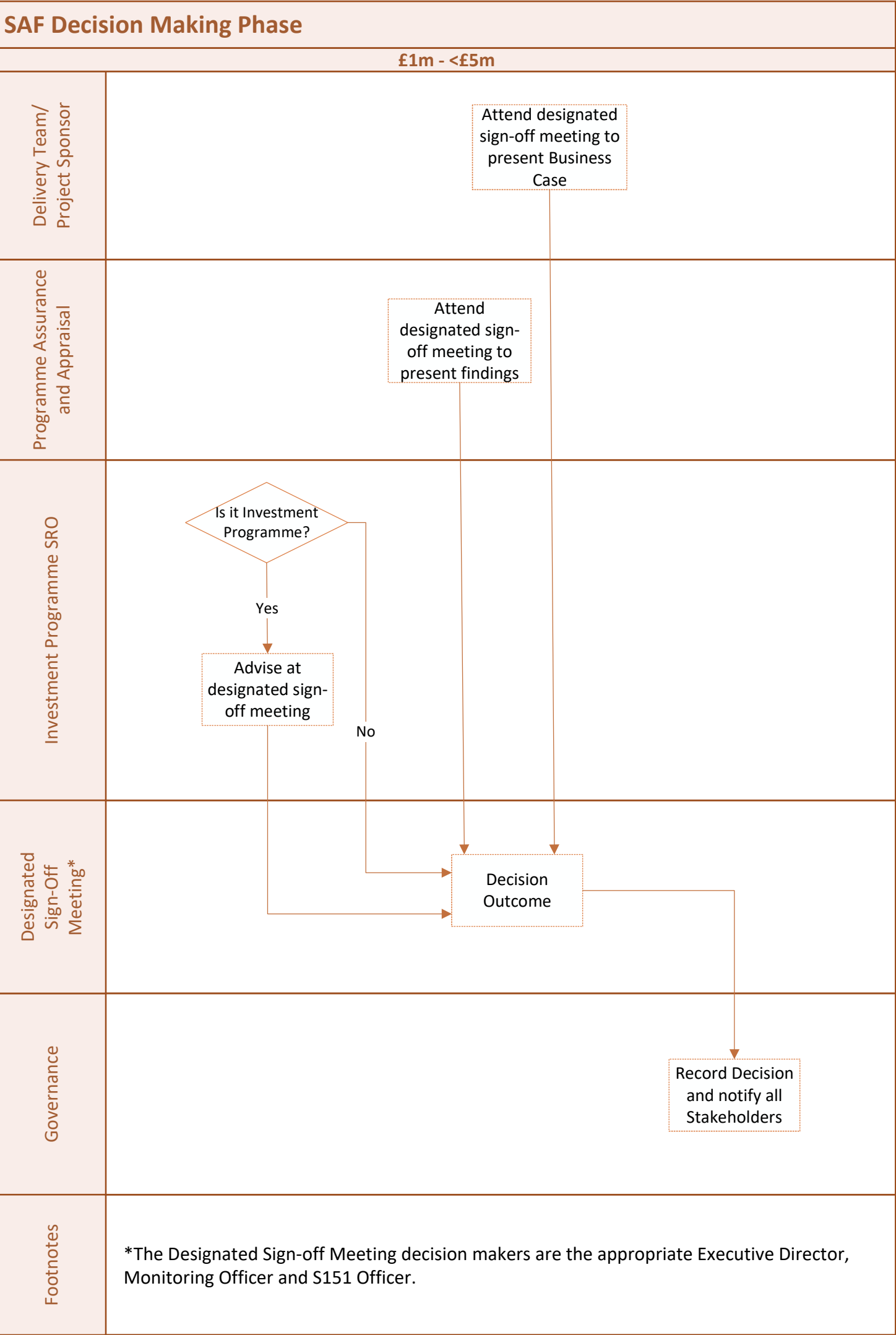
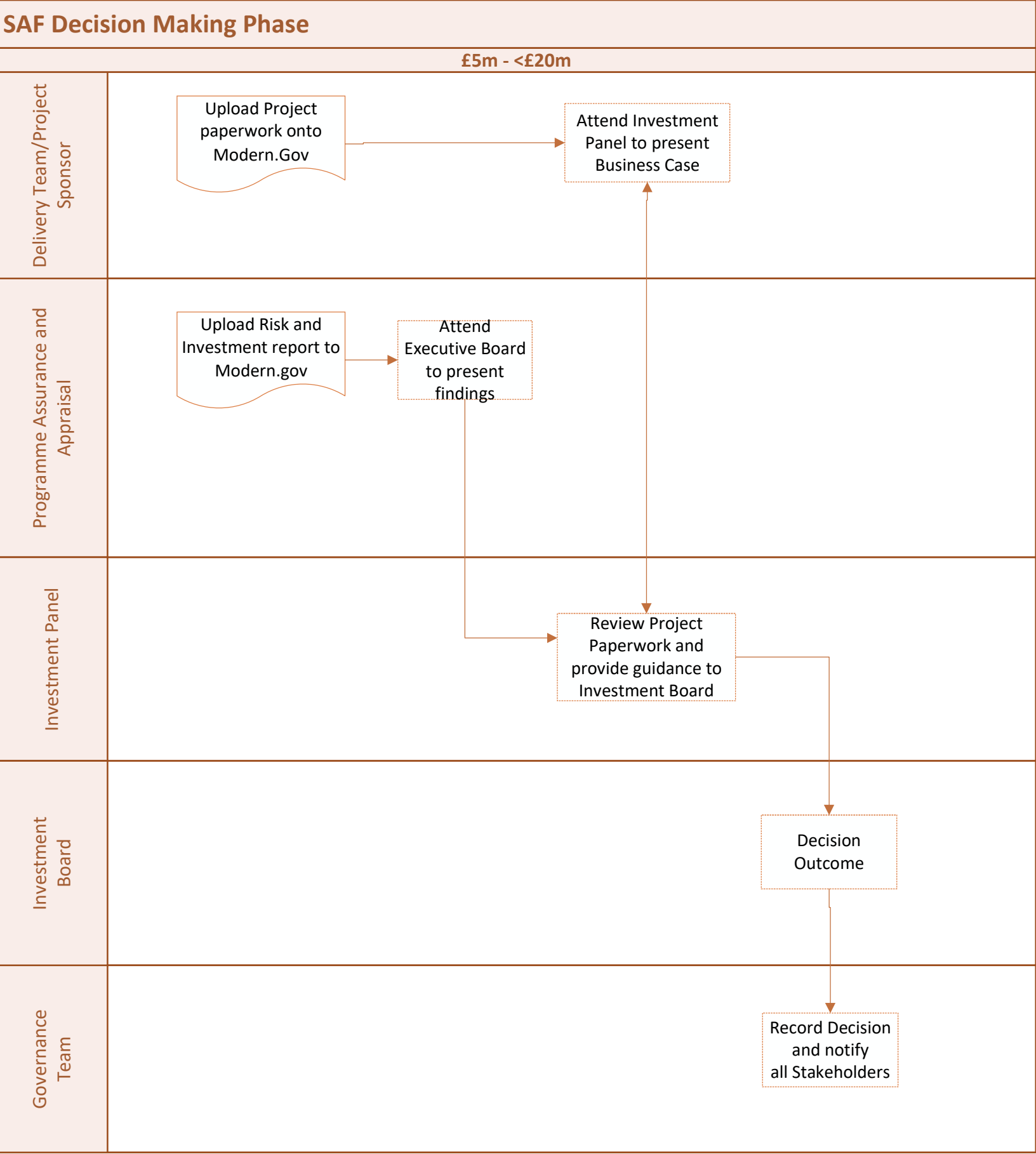


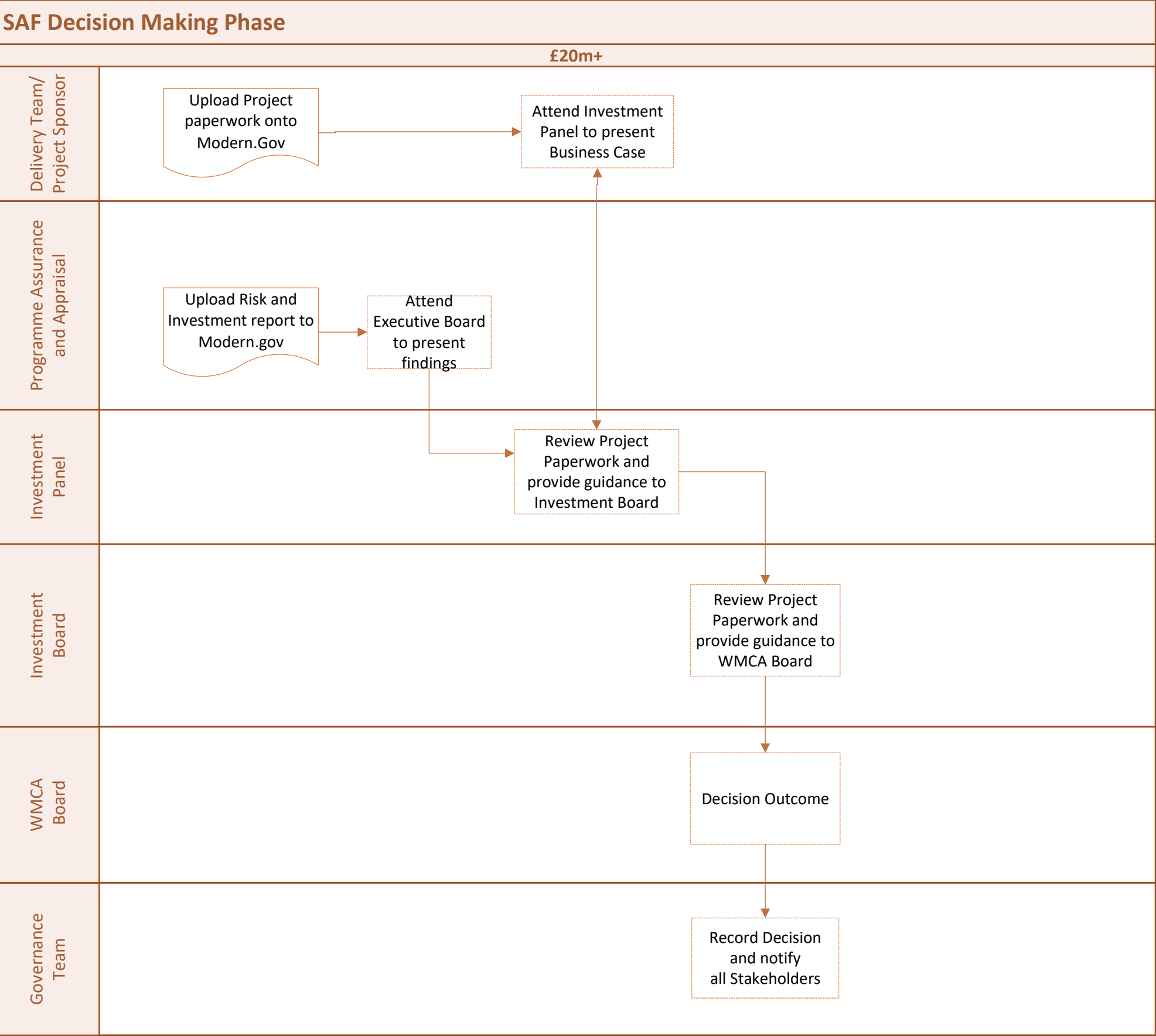
SAF Development Phase













SAF Decision Making Phase				
<£1m		£1m - <£5m	£5m - <£20m	£20m +
Programme Assurance and Appraisal	<div>Assurance</div> <div>Risk &amp; Appraisal</div>	<div>Assurance</div> <div>Risk &amp; Appraisal</div>	<div>Assurance</div> <div>Risk &amp; Appraisal</div>	
Executive Director	<div>Executive Director Decision</div>			
Designated sign-off Meeting		<div>Decision at designated sign-off meeting*</div>		
Investment Panel			<div>Investment Panel Feedback</div>	
Investment Board			<div>Investment Board Decision</div>	
WMCA Board			>£20m only	<div>WMCA Board Decision</div>
Footnotes		*The Designated Sign-off Meeting decision makers are the appropriate Executive Director, Monitoring Officer and S151 Officer.		

WMCA Single Assurance Framework Change Control Process v2.2

